

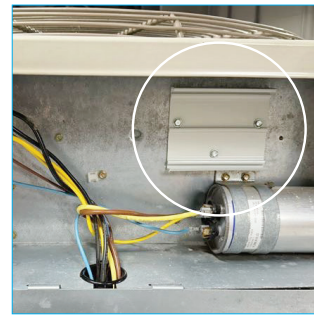
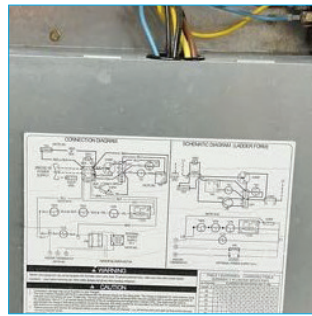
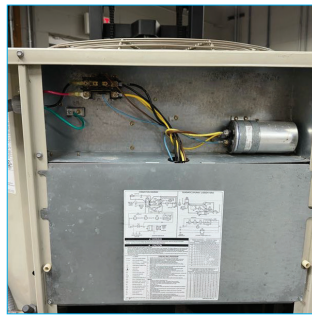


**Good News!**  
Your AirGo install is half done!

**1** You have received your AirGo Soft Starter!

**2** Remove everything from the box

**3** Land the wires

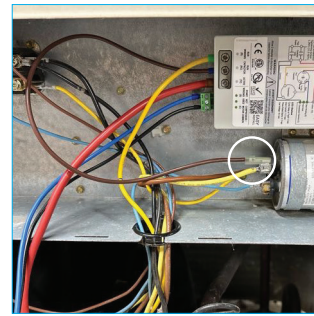
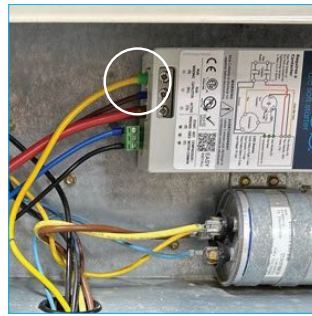
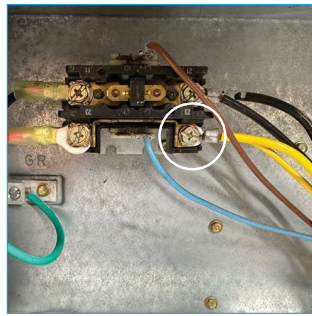


**4** Turn off power to the HVAC unit at the circuit breaker or disconnect

**5** Open AC unit

**6** Look at wiring diagram. Backside of cover or below

**7** Install mounting bracket. Bracket can be mounted vertically or horizontally

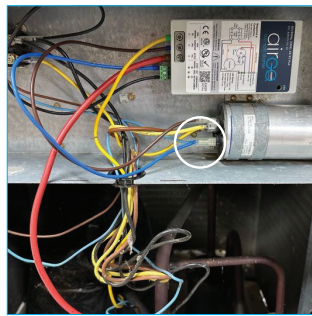
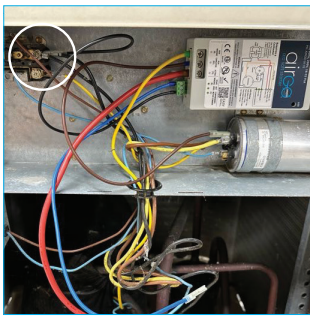


**8** It's time to install your AirGo soft starter

**9** Remove compressor Run Wire (yellow in this example) from the contactor or terminal, as applicable

**10** Strip the compressor Run Wire at least 1/2". Terminate wire in Run Winding terminal on AirGo

**11** Terminate brown wire from AirGo to "C" on the capacitor



**12** Black wire from AirGo to loadside contactor labeled 21 in this application

**13** Terminate blue wire from AirGo to "H" on the capacitor

**14** Red wire from AirGo active to loadside contactor, labeled 23 in this application

**15** Wiring is complete! You're AirGo is installed

AirGo® must be installed in a location that ensures that the external heat from a hot gas line, compressor discharge piping, or similar heat source will not cause damage. Minimum 3" (76 mm) clearance is recommended. AirGo must be installed by qualified/licensed technician.

**CAUTION:** This product can expose you to chemicals including Bisphenol A and Ethylene Glycol, which are known to the State of California to cause cancer or birth defects, or other reproductive harm. For more information, go to [www.P65Warnings.ca.gov](http://www.P65Warnings.ca.gov).

**WARNING:** Suitable for use on a circuit capable of delivering no more than 5000rms symmetrical amperes, 240 volts maximum, when protected by a non-time delay RK5 fuse or circuit breaker rated 80A, or a time delay fuse rated 70A. The device does not provide current limiting control or equivalent. AirGo is NOT an overcurrent protection device and must NOT be used as a replacement for any primary circuit overcurrent protection.

**If you have questions with your install, contact Bob Cramer: [cramermes@gmail.com](mailto:cramermes@gmail.com) | 262-893-4375**