

1 Sizing chart to order correct AirGo.

Sample Data Tag

What is your AC unit's Tonnage?
AC unit's tonnage is determined on the data tag. Looking at the product number, the example shows: 48-55, 55 is a 4-ton unit because 1-ton = 12,000 Btu.

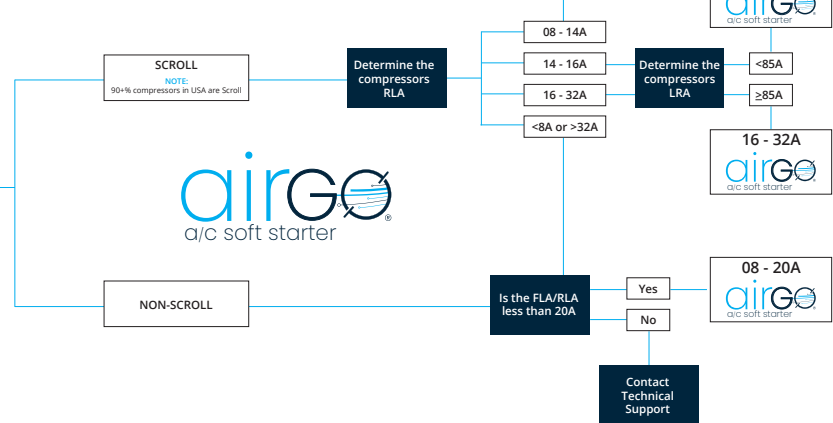
What is your FLA? FLA stands for "Full Load Amps".

What is your LRA? LRA stands for "Locked Rotor Amps".

Model	1500E2450B
Part No.	5240N2450A
Size	48-55
Phase	3-Phase
Frequency	60 Hz
Compressor	2-3/8"
Compressor Type	2-3/8"
Compressor Speed	1725 RPM
Compressor FLA	25.1
Compressor LRA	137.9
Compressor Type	2-3/8"
Compressor Speed	1725 RPM
Compressor FLA	25.1
Compressor LRA	137.9
Compressor Type	2-3/8"
Compressor Speed	1725 RPM
Compressor FLA	25.1
Compressor LRA	137.9



Identify your compressor size



2 You have received your AirGo Soft Starter!

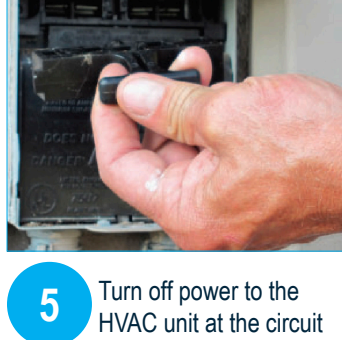


3 Remove everything from the box

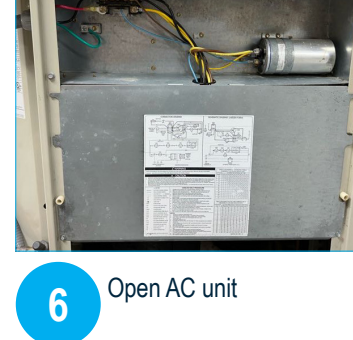


4 Land the wires

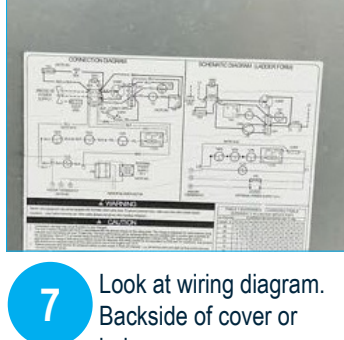
Good News!
The job is half done!



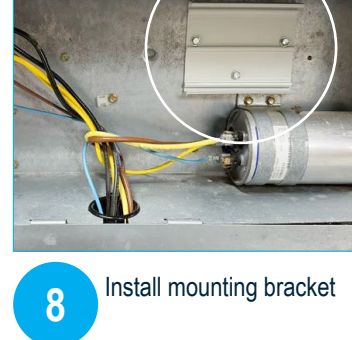
5 Turn off power to the HVAC unit at the circuit breaker or disconnect



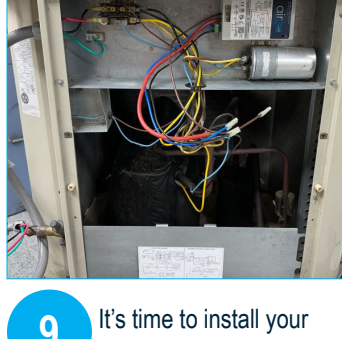
6 Open AC unit



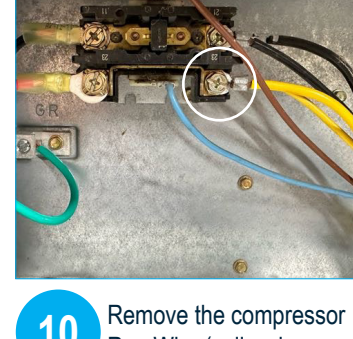
7 Look at wiring diagram. Backside of cover or below



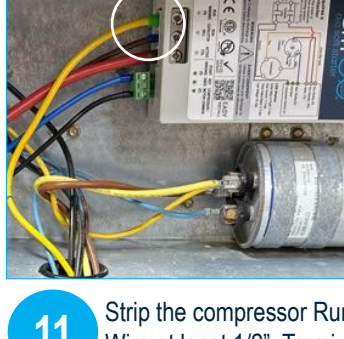
8 Install mounting bracket



9 It's time to install your AirGo soft starter



10 Remove the compressor Run Wire (yellow in this example) from the contactor or terminal, as applicable



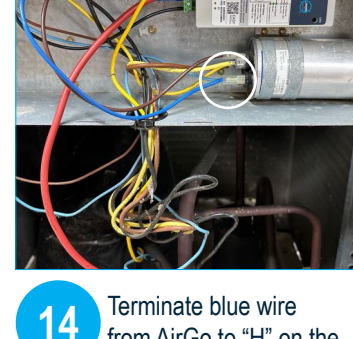
11 Strip the compressor Run Wire at least 1/2". Terminate wire in Run Winding terminal on AirGo



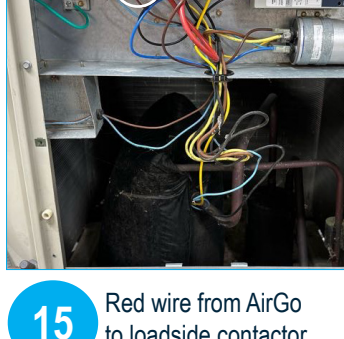
12 Terminate brown wire from AirGo to "C" on the capacitor



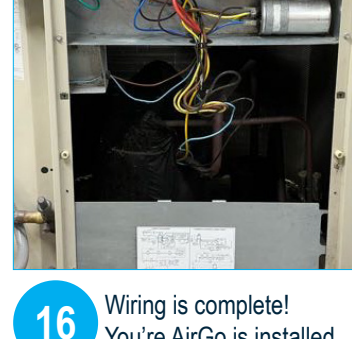
13 Black wire from AirGo to loadside contactor labeled 21 in this application



14 Terminate blue wire from AirGo to "H" on the capacitor



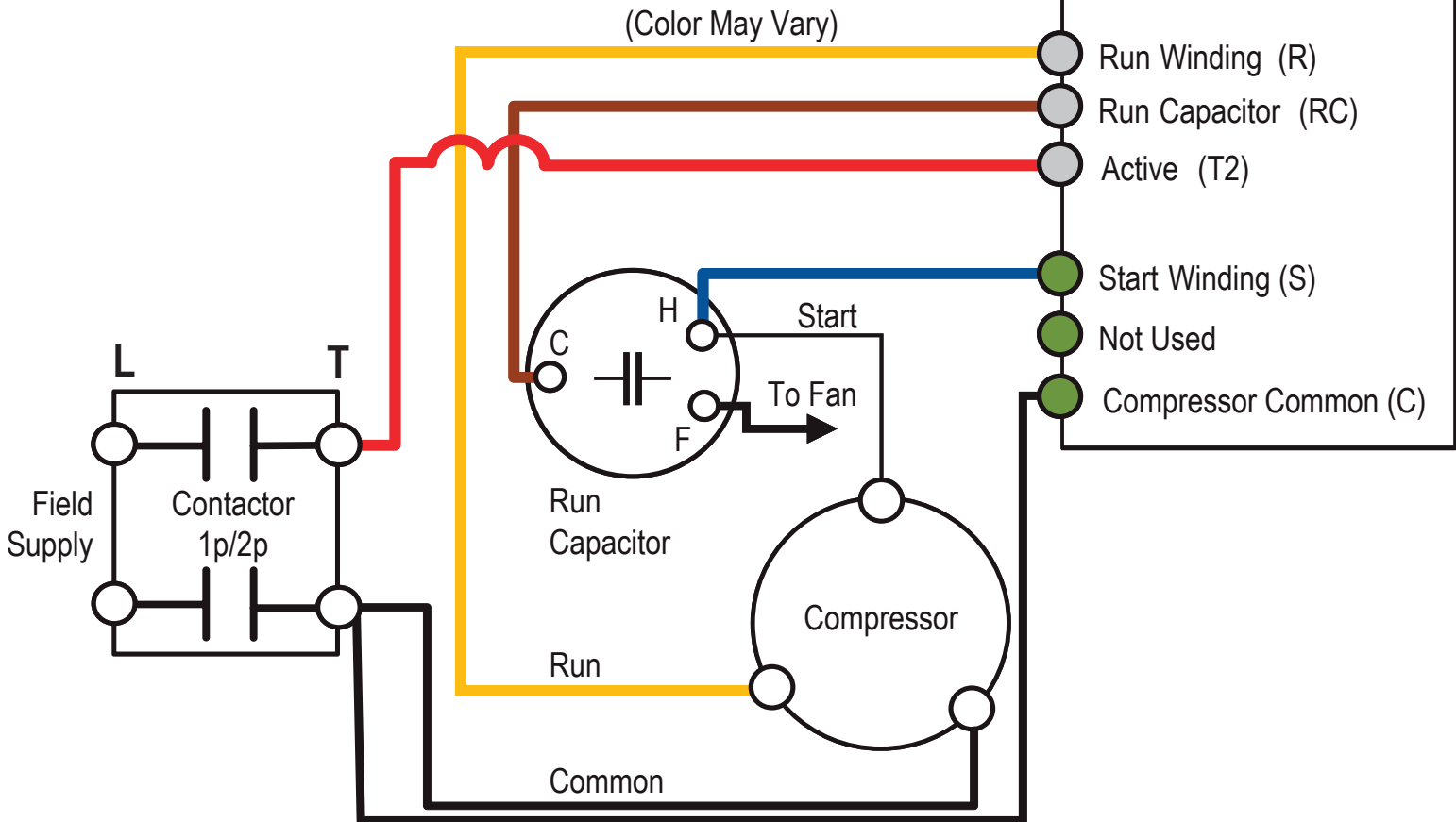
15 Red wire from AirGo to loadside contactor labeled 23 in this application



16 Wiring is complete! You're AirGo is installed

17 If you have questions with your install, contact Bob Cramer: cramermes@gmail.com | 262-893-4375

INSTALLATION DRAWING



WARNING: Suitable for use on a circuit capable of more than 5000rms symmetrical amperes, 240 volts maximum, when protected by a non-time delay RK5 fuse or circuit breaker rated 80A, or a time delay fuse rated 70A. The device does not provide current limiting control or equivalent. AirGo is NOT an overcurrent protection device and must NOT be used as a replacement for any primary circuit overcurrent protection.

CAUTION: This product can expose you to chemicals including Bisphenol A and Ethylene Glycol, which are known to the State of California to cause cancer or birth defects, or other reproductive harm. For more information, go to www.P65Warnings.ca.gov.

AirGo must be installed in a location that ensures that the external heat from a hot gas line, compressor discharge piping, or similar heat source will not cause damage. Minimum 3" (76 mm) clearance is recommended. AirGo must be installed by qualified/licensed technician.

AG AIRGO SOFT START 120/240V APPLICATIONS

- Residential AC
- Commercial AC
- Marine
- RV

INSTRUCTION GUIDE | SINGLE PHASE

AIRGO 120/240 HVAC INSTALLATION:
The AirGo a/c soft starter functions only as a soft starter, a contactor is still required. This model is suitable for a wide range of applications. Some degree of care is needed to determine correct wiring.

- CAUTION/WARNING:**
- All voltage to equipment MUST be disconnected before removing any devices.
 - Allow 2 minutes to discharge run capacitor before disconnecting.
 - Do not swap the Run & Start Windings.
 - Prior to installation, be sure all start capacitors & start relays, along with hard-starters and/or any other start-assist devices, are removed.
 - The start capacitor is built into the soft starter.
 - Loose terminals can lead to heating & subsequent damage to the soft starter. As per, UL508 standard, ensure below tightening torques.
 - OPENING OF THE SOFT STARTER UNIT WILL VOID THE WARRANTY!

- PARTS LIST:**
- 1 x AirGo soft starter
 - 1 x Red Wire
 - 1 x Blue Wire
 - 1 x Black Wire
 - 1 x Brown Wire
 - 1 x Mounting Bracket
 - 1 x Green Connector
 - 1 x Pack of Two Ferrules



LED FLASH CODES:

Flash Code	Definition	Time to re-start attempt
Rapid Flash (10/1 sec)	Low voltage	3 minutes
Triple Flash (3/3 sec)	Lockout on 3 failed starts	50 minutes
Slow Flash (1/3 sec)	Lockout on overcurrent	10 minutes
Steady Flash (1/1 sec)	Cycle delay / faults	3 minutes

Note: LED fault indicator remains off in normal running mode

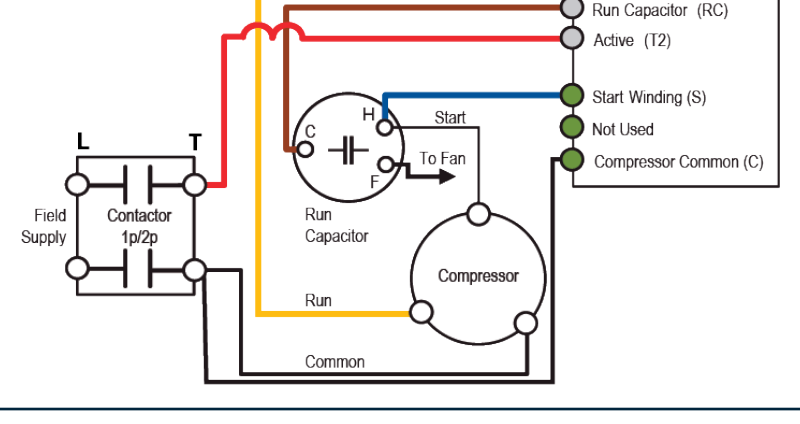
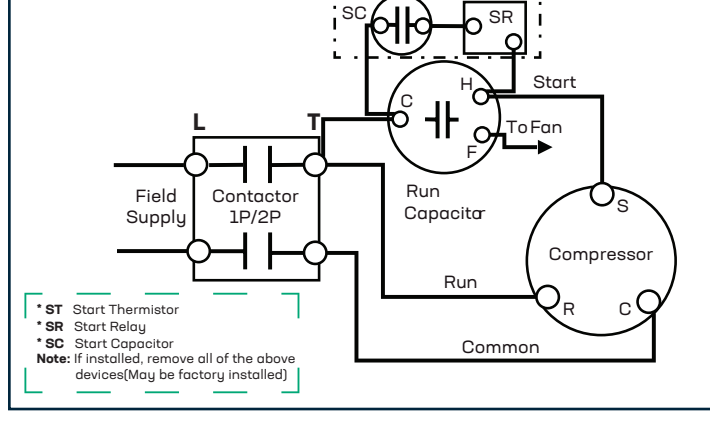
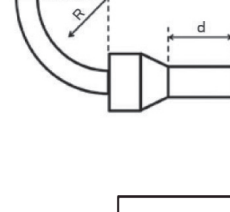
FIELD WIRING SPECIFICATIONS:

Wire Range: 8 to 12 AWG Cu, stranded, for terminals (Run Winding (R) and Active(T2)) 12 to 16 AWG Cu, stranded, for terminals (Run Capacitor (RC), Start Winding (S), and Compressor/Motor Common (C), these are supplied)

Tightening Torque: 11.5 LBS-IN LARGE TERMINALS, 4.5LBS-IN SMALL TERMINALS.

Field wiring conductors shall be rated 167°F [75°C] Minimum end use enclosure size: 10" x 8" x 6"

- CRIMP CORRECT SIZED FERRULES TO ENSURE PROPER TERMINATION
- INSERTION LENGTH OF FERRULE "D": 11 ± 1 MM (0.43 ± 0.04")
- CABLE BEND RADIUS "R" > 38MM (1.5") MINIMUM



MES Group, LLC 414-507-7661 emily.sensiba@mesgrp.com installcentral.com

Single Phase - 50/60HZ Soft Starters



AirGo soft starters are designed with expertise and innovation. Our starters are carefully crafted to help optimize your equipment while providing the best possible results. If you're looking for originality and performance, you've found it here.

UNIQUE FEATURES INCLUDE:

- Self optimizes for a wide range of compressor sizes
- Under-voltage and over-current protection
- Reverse motor protection and detection